



12 / 24VDC Input Module

HE800DIM310 / HE800DIM410
16 / 32 Channels
Positive or Negative Logic



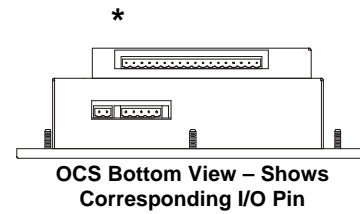
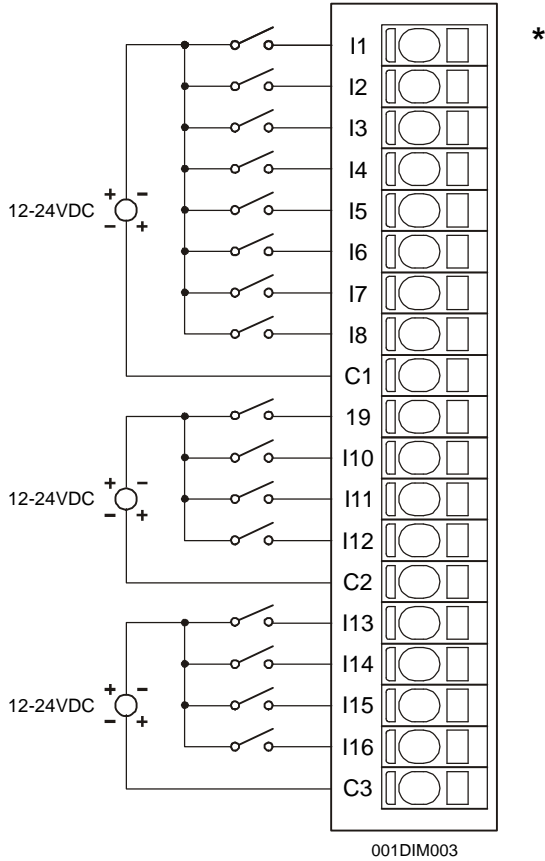
1 SPECIFICATIONS

	DIM 310	DIM 410		DIM 310	DIM 410
Inputs per Module	16	32	Minimum ON Current	1 mA.	
Commons per Module	3	6	Input Characteristics	BiDirectional	
Input Voltage Range	12-24VDC		Maximum OFF Current	200µA	
Peak Voltage	35VDC Max.		OFF to ON Response	1ms.	
Isolation Voltage (Common to Common and Common to Channel)	500VDC		ON to OFF Response	1ms.	
Required Power (Steady State)	.24W (10mA@24VDC)		Terminal Type	Spring Clamp, Removable	
Required Power (Inrush)	Same as Steady State		Relative Humidity	5 to 95% Non-condensing	
ON Voltage Level	9VDC Min.		Operating Temperature	0° to 60° Celsius	
OFF Voltage Level	3VDC Max.		CE	MAN0005	
Input Impedance	10K Ohms		UL	SUP0259	

MAN0369-02

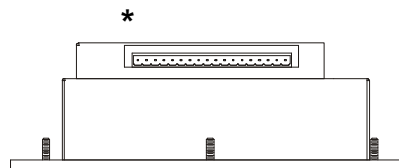
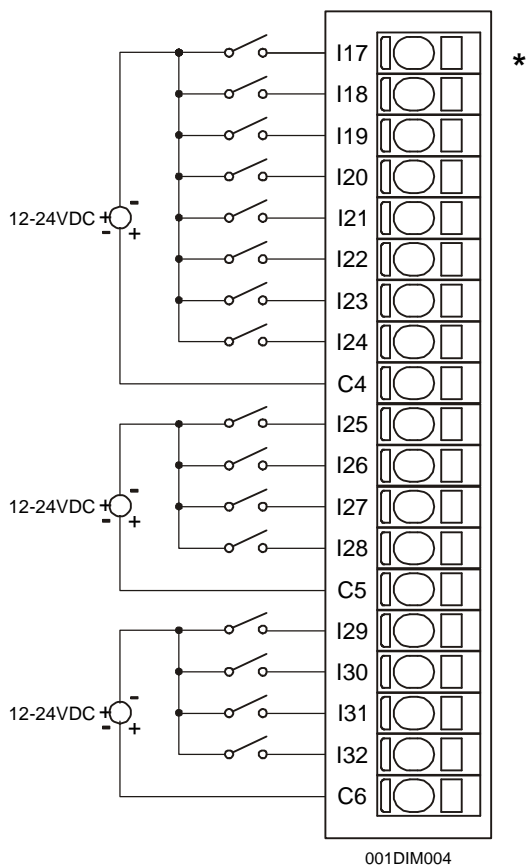
2 WIRING

2.1 DIM310 / DIM410 Wiring



Pin	Signal
	DIM310/410 INPUT
I1	Input 1
I2	Input 2
I3	Input 3
I4	Input 4
I5	Input 5
I6	Input 6
I7	Input 7
I8	Input 8
C1	Common 1 (Isolated)
I9	Input 9
I10	Input 10
I11	Input 11
I12	Input 12
C2	Common 2 (Isolated)
I13	Input 13
I14	Input 14
I15	Input 15
I16	Input 16
C3	Common 3 (Isolated)

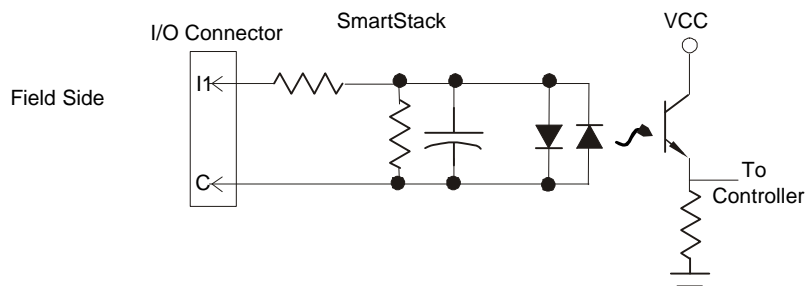
2.2 DIM410 Wiring



OCS Top View – Shows
Corresponding I/O pin

Pin	Signal
	DIM410 INPUT
I17	Input 17
I18	Input 18
I19	Input 19
I20	Input 20
I21	Input 21
I22	Input 22
I23	Input 23
I24	Input 24
C4	Common 4 (Isolated)
I25	Input 25
I26	Input 26
I27	Input 27
I28	Input 28
C5	Common 5 (Isolated)
I29	Input 29
I30	Input 30
I31	Input 31
I32	Input 32
C6	Common 6 (Isolated)

3 INTERNAL WIRING

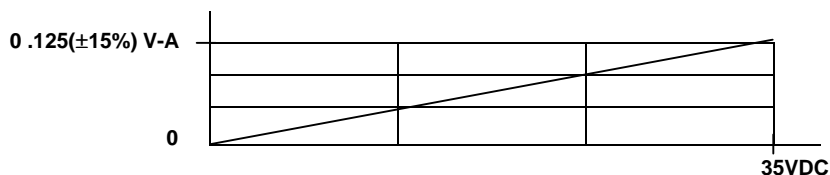


4 CONFIGURATION

Preliminary configuration procedures that are applicable to all SmartStack™ Modules are located in the Control Station Hardware Manual (MAN0227). Although the module has no user defined parameters, the I/O Map describes which I/O registers are assigned to a specific SmartStack™ Module and where the module is located in the point map. The I/O Map is determined by the model number and location within the SmartStack™. The I/O Map is not edited by the user.

5 INPUT CHARACTERISTICS

Digital Input Chart



6 INSTALLATION / SAFETY

Warning: Remove power from the OCS controller, CAN port, and any peripheral equipment connected to this local system before adding or replacing this or any module.

- a. All applicable codes and standards are to be followed in the installation of this product.
- b. Use the following wire type or equivalent: Belden 8917, 16 AWG or larger.

For detailed installation information, refer to Chapter Two in the Control Station Hardware Manual (MAN0227). A handy checklist is provided that covers panel box layout requirements and minimum clearances

7 TECHNICAL ASSISTANCE

For assistance, contact Technical Support at the following locations:

North America:

(317) 916-4274 or visit our website at www.heapg.com.

Europe:

(+) 353-21-4321-266

NOTES