

Duct/immersion temperature sensor Model A2G-60

Applications

For measuring the temperature of gaseous media in heating, ventilation and air-conditioning systems
Designed for locking on to control and display systems
In combination with a stem also suitable for measuring liquid media (e.g. in pipeline systems)

Special features

Simple mounting
Compact and robust
Direct installation into the process
Incl. mounting flange



Duct/immersion temperature sensor model A2G-60

Description

Design
per EN 60730-1 (2000)
CE conformity: 89/336/EWG
Electromagnetic compatibility

Accuracy @ 21°C
Typically ± 1 % of measuring range

Scale ranges

0 ... +50 °C	Standard temperature setting
-50 ... +50 °C	to be set via jumper
-15 ... +35 °C	to be set via jumper
-10 ... +120 °C	to be set via jumper
0 ... +160 °C	to be set via jumper
0 ... +250 °C	to be set via jumper

Ambient temperature at connection head
-35 ... +70 °C

Power consumption
Typically 0.35 W / 0.82 VA

Output
TRV 0 ... 10 V, min. load 5 k Ω , terminal, 3-pin (3-wire)
TRA 4 ... 20 mA (2-wire)

Ingress protection
IP 65 per EN 60529 / IEC 529

Electrical connection

Connection terminal, 3-pin (3-wire)

Cable gland:

Single, M16 for cable of max. D = 8 mm

Insertion length L standard

192 mm ($\varnothing = 7$ mm)

Other lengths on request

Sensor sleeve

Stainless steel 1.4571

Permissible temperatures

Head temperatures

-35 ... +90 °C passive (Pt1000 and Ni1000)

-35 ... +70 °C active (TRV and TRA)

Sensor sleeve

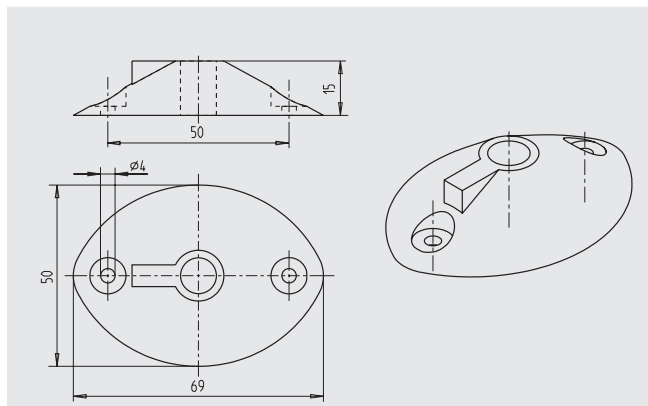
Standard: -50 ... +160 °C

High temperature version: -50 ... +260 °C

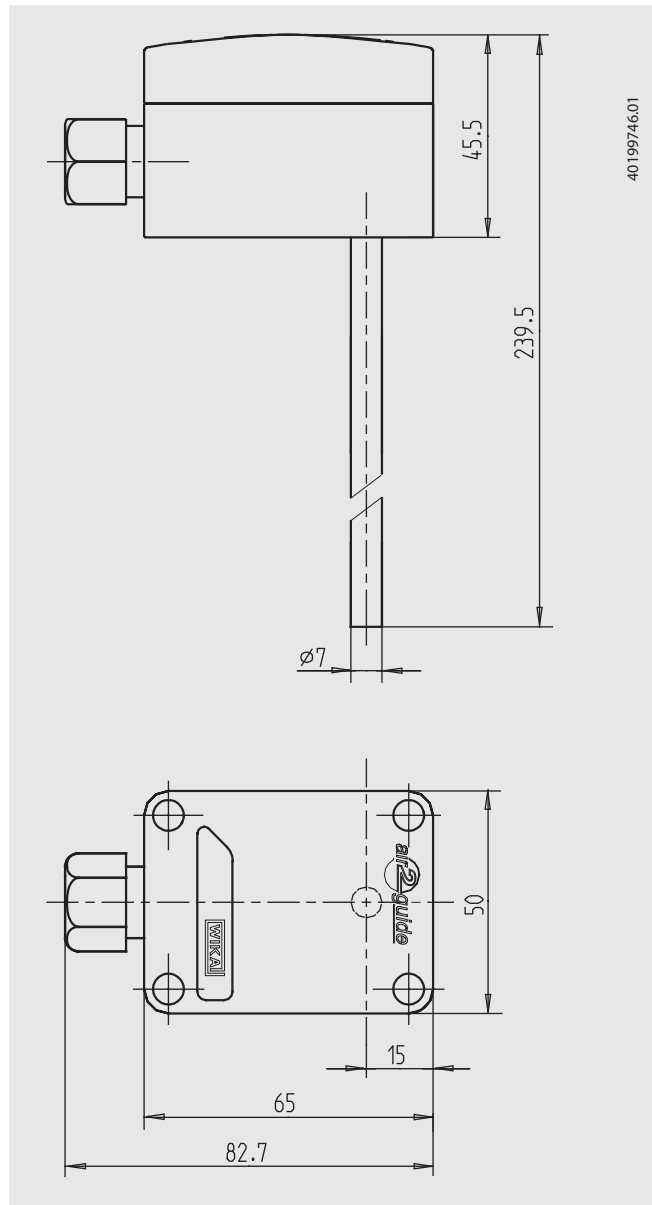
Mounting flange

Material PA6.6, colour black

Max. +130 °C

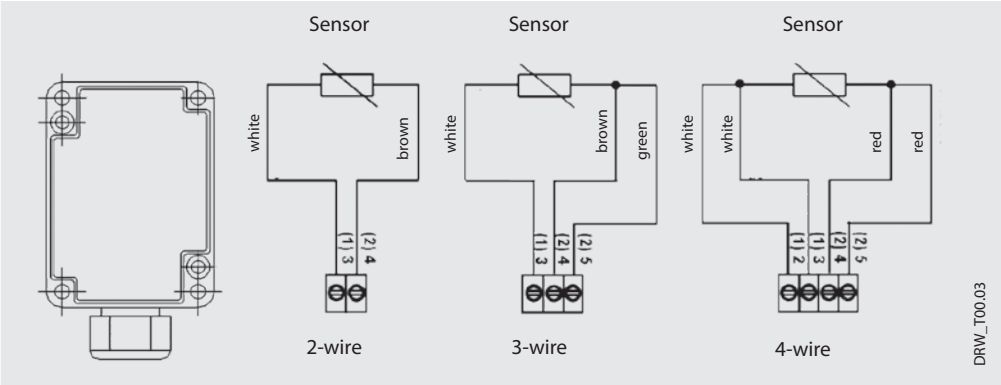


Dimensions in mm



40199746.01

Connection diagram (selection) Pt1000/Ni1000 sensor



Scale range adjustment for a TRV sensor

